



Environment
Agency

Monthly water situation report

South East Region, North East Thames Area

Summary – December 2013

A quiet start to the month, gave way to heavy and often intense rainfall. Flows in the Area's rivers responded as the soil became saturated. Sixteen flood alerts and two flood warnings were issued during late December. Groundwater levels have begun to rise in response to recharge.

Rainfall

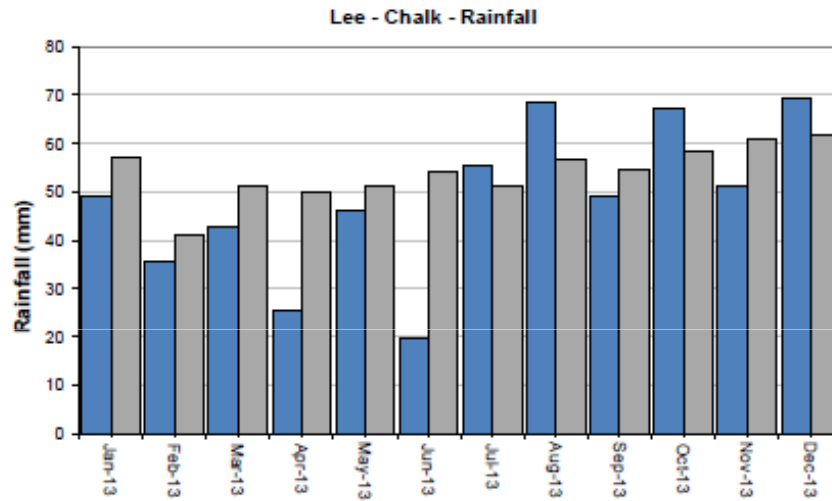
There was a quiet start to the month, giving way to heavy and often intense rainfall across the North East Thames Area ("the Area") during the latter weeks of December contributing towards large rainfall totals. The Area had 138 % of its December Long Term Average (LTA) rainfall and the Colne-Chilterns-Chalk was the wettest area. Daily rainfall totals greater than 10 mm were recorded on the 15th, 16th, 18th, 21st, 23rd, 30th December. The single biggest daily total was recorded at our Prestwood Reservoir raingauge with 38.6mm recorded on the 23rd.

Soil Moisture Deficit/Recharge

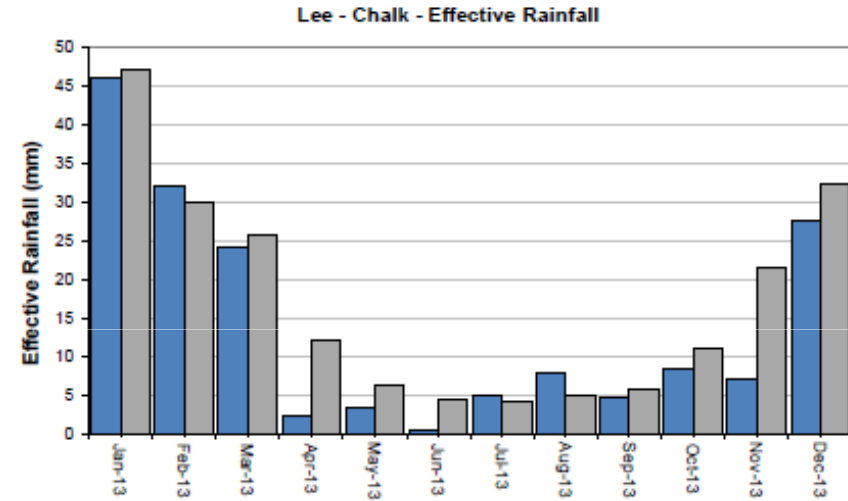
Soils across the Area ended the month with no moisture deficit, enabling large effective rainfall totals to develop. For the clay and urban catchments of North London, the Lower Lee and the Roding, this meant rapid runoff into rivers, while the Chalk catchments saw groundwater recharge. By the end of the month the area had effective rainfall totals in excess of 180% of its LTA.

Upper Lee

Monthly total rainfall (mm)

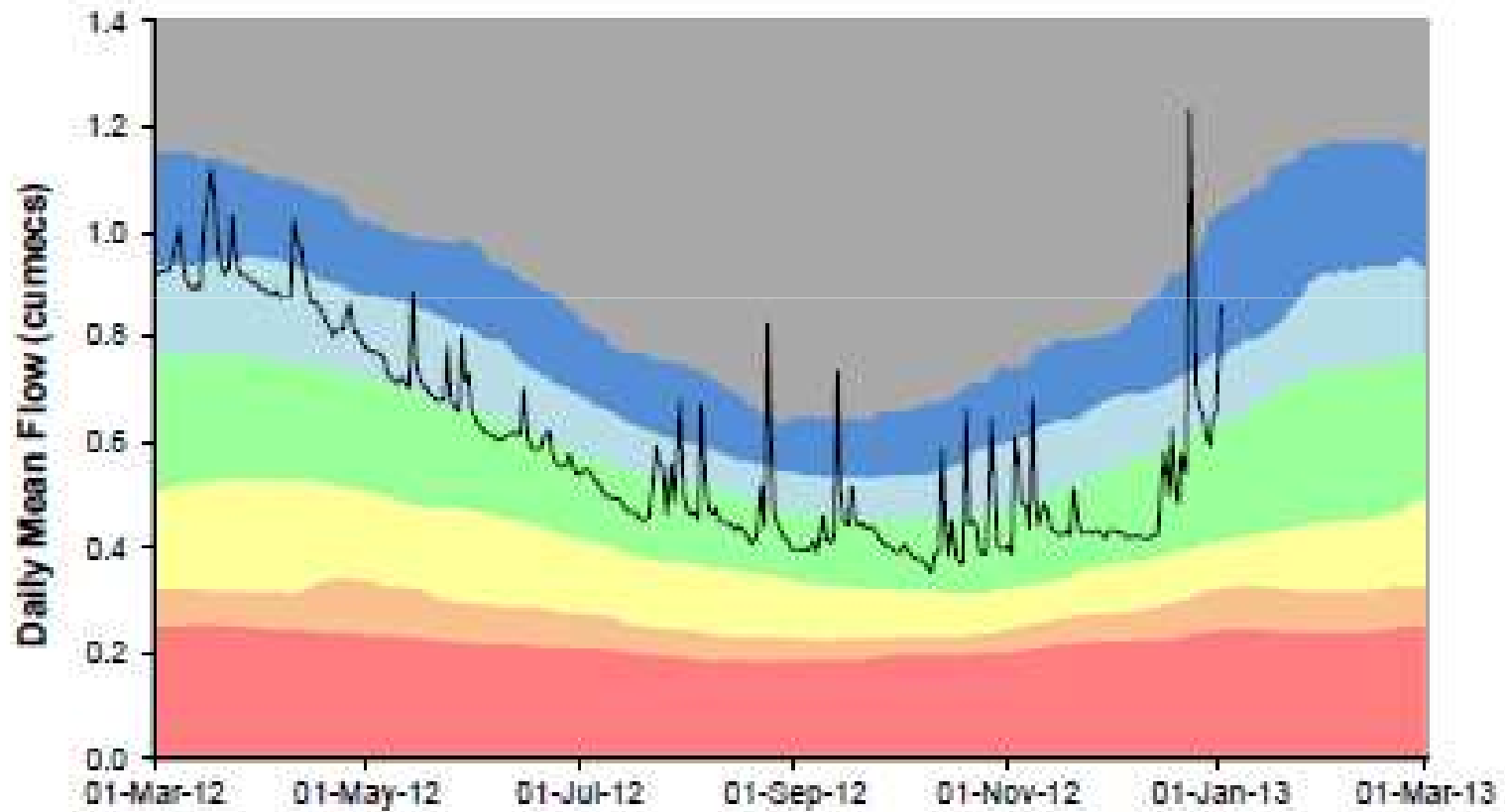


Long term average rainfall (mm)



RIVER MIMRAM AT PANSHANGER

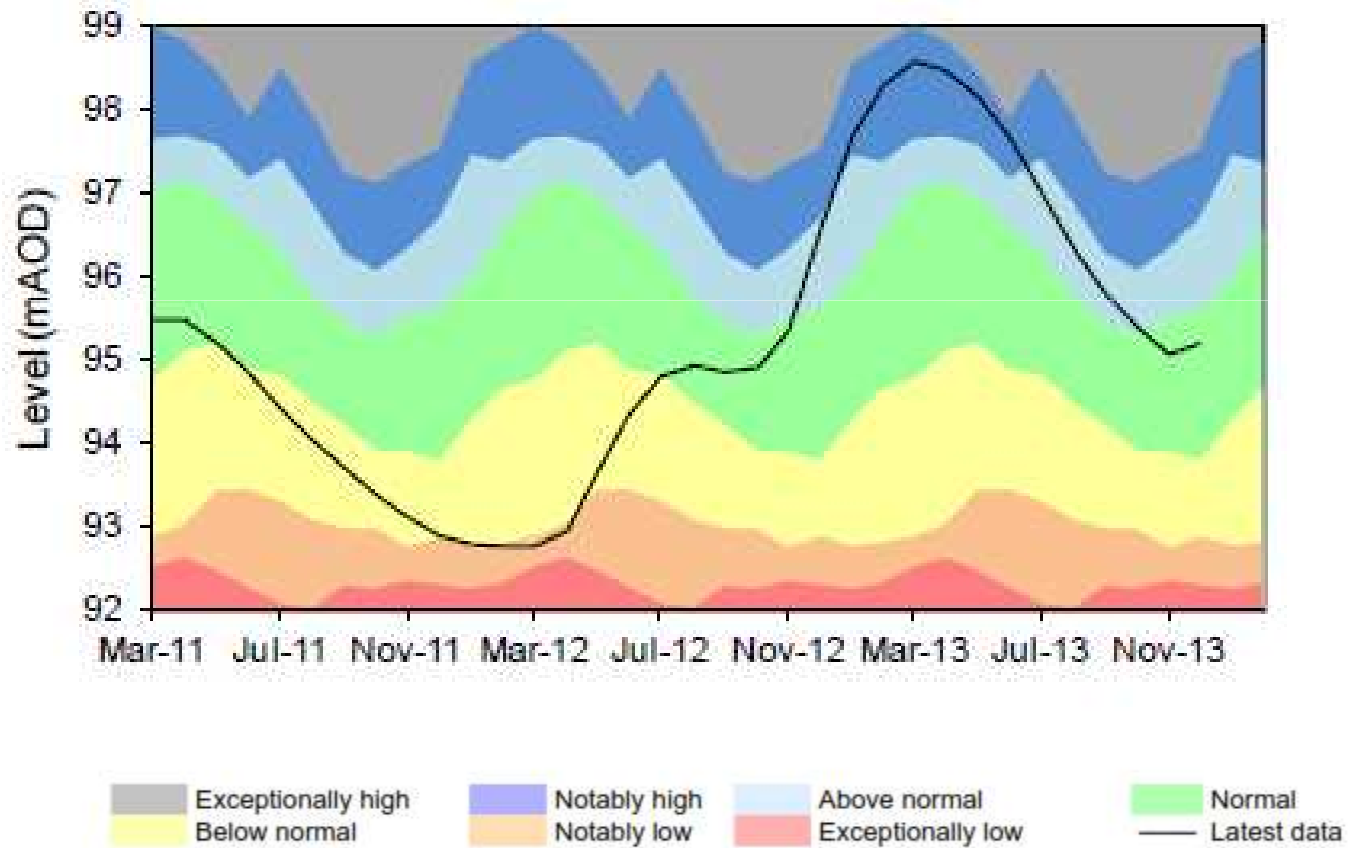
Ranking derived from data for the period 01/12/1962 to 31/12/2012



Upper Lee groundwater

LILLEY BOTTOM OBH

Ranking derived from data for the period Jul-1979 to Dec-2012



Rainfall and Effective Rainfall – Winter total for period 1 October 2013 to 31 December 2013

Area	Rainfall (mm)			Effective Rainfall (mm)		
	Total (mm)	LTA (mm)	% of LTA	Total (mm)	LTA (mm)	% of LTA
Chilterns- East - Colne	257	205	126	108	105	102
Lee - Chalk	188	179	105	43	72	59
North London	246	184	134	92	59	157
Lower Lee	238	179	133	90	66	138
Roding Catchment	210	166	126	60	51	118
North East Thames Area Average	228	182	125	79	71	112